



GEOFRAME
PROCESSED
INTERPRETATION

BestDT*

SonicVision Processing

Run3 : 2375m - 2775m (1/200)

* A Mark of Schlumberger

Using the following logs: sonicVision

COMPANY: Beach Petroleum Ltd
WELL: Fermat-1
FIELD: Wildcat
Rig: West Triton
State: VIC
COUNTRY: Australia
Date Logged: 29-Dec-2008 Date Processed: 29-Dec-2008
Well Location: Otway Basin

Elevations: KB: 38m GL: -38.7m

API Number: 08ASSQ0034

FOLD HERE The well name, location and borehole reference data were furnished by the customer.

All interpretations are opinions based on inferences from electrical or other measurements and we cannot, and do not guarantee the accuracy or correctness of any interpretation, and we shall not, except in the case of gross or willful negligence on our part, be liable or responsible for any loss, costs, damages or expenses incurred or sustained by anyone resulting from any interpretations made by any of our officers, agents or employees. These interpretations are also subject to Clause 4 of our General Terms and Conditions as set out in our current Price Schedule.

Field Recording:	Location:	Software Version: 13X0-101	Engineer: Joshua S
Office Recording:	ICS Center: Melbourne	Baseline: GF 4.3 DC3	Log Analyst: A. Datey

Mud and Borehole Measurements:

Rm @ Measured Temperature: 0.08ohm.m @ 23.9degC	BHT:	Bitsize: 12.25in
Rmf @ Measured Temperature:0.07ohm.m @ 23.9degC	Type Fluid in Hole:	WBM
Rmc @ Measured Temperature:0.12ohm.m @ 23.7degC	Mud Density: 9.7 ppg	

Remarks:

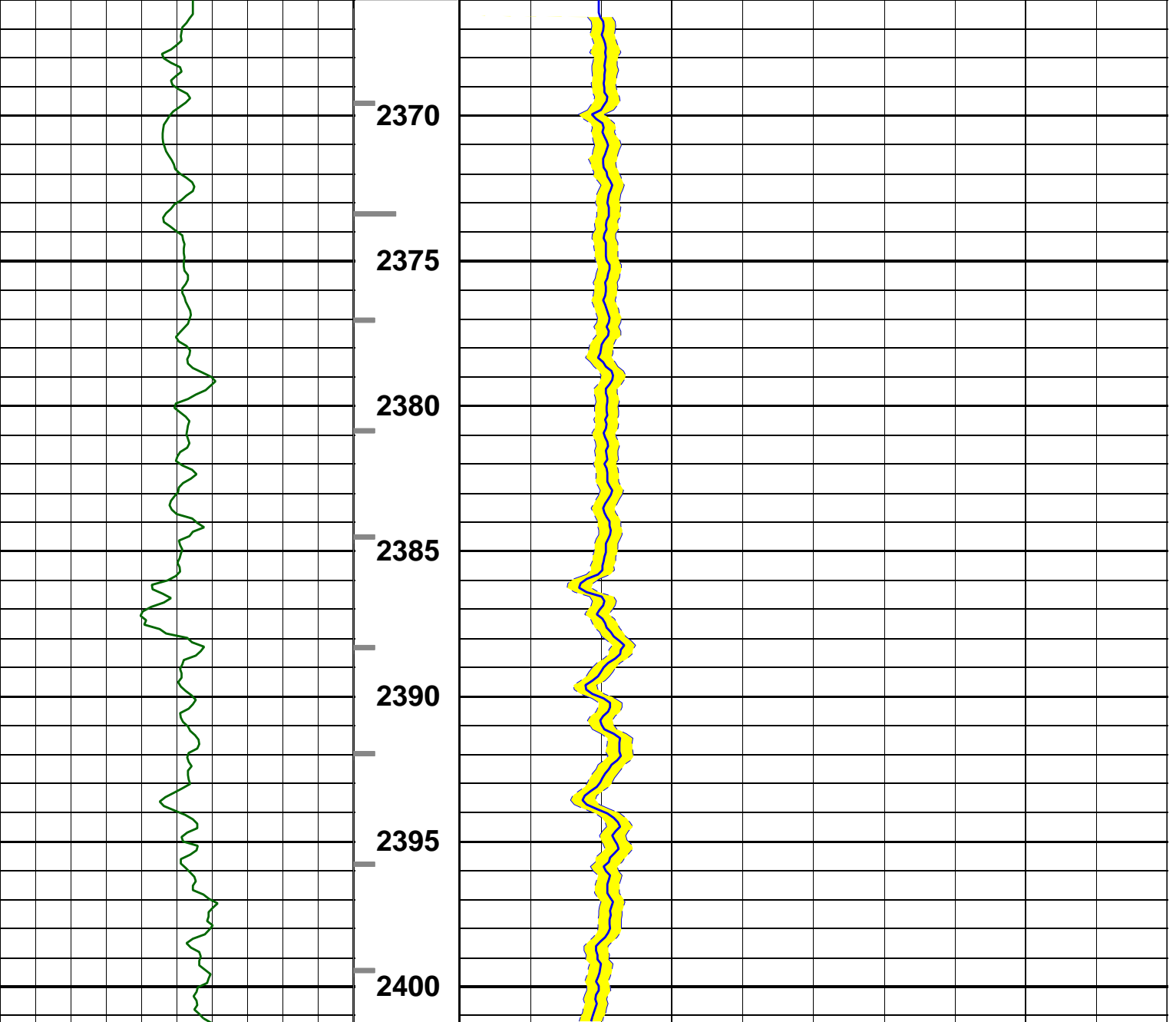
sonicVision8 logged in hole drilled with bit size of 12 1/4"
The overall data quality is very good.
See the bottom of the QC log for processing parameters.

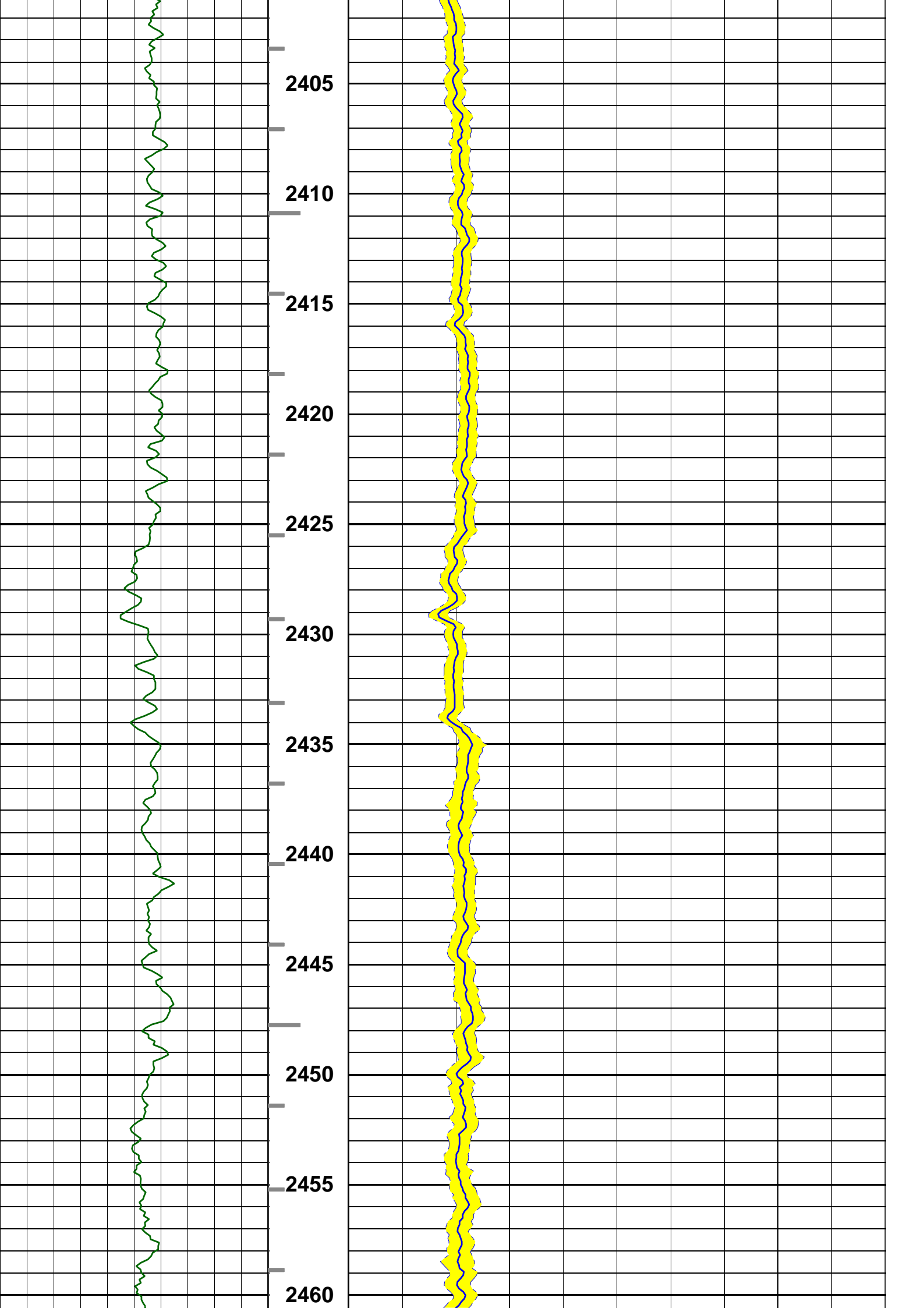
ITT PIPS - Small:1ms ; Large:10ms

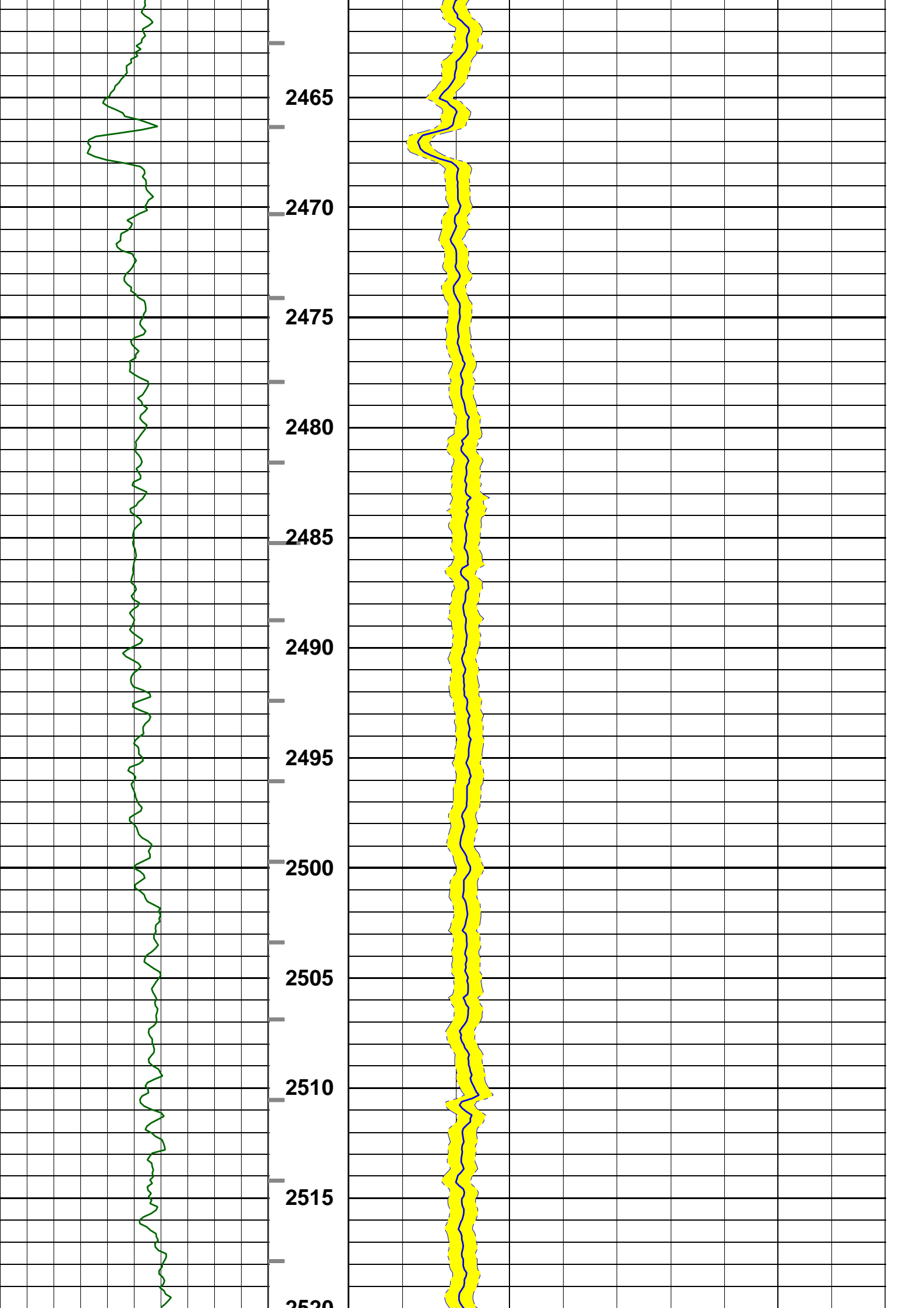
MD
1 : 200
m
ITT
0 () 5

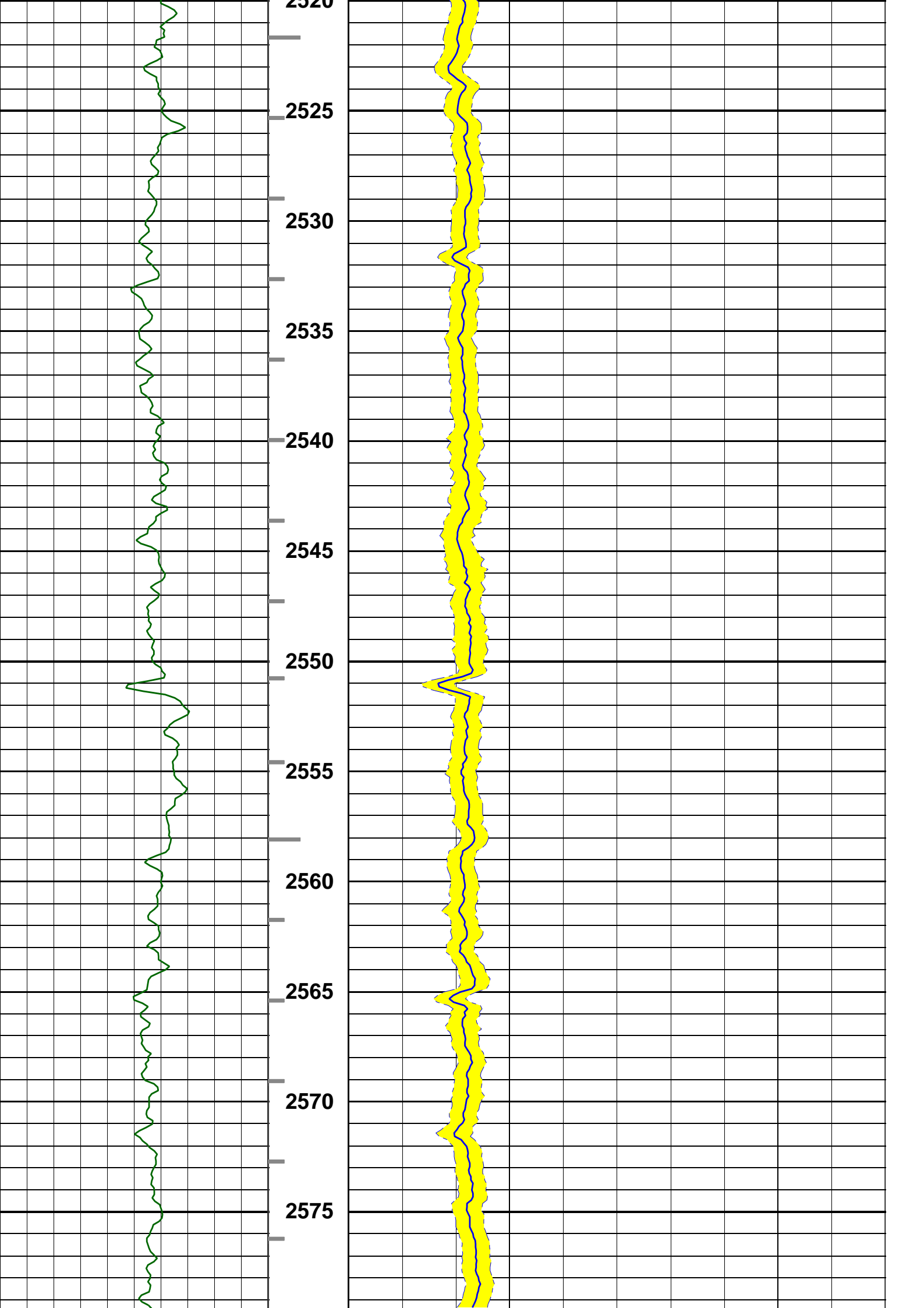
Gamma Ray
0 (gAPI) 200

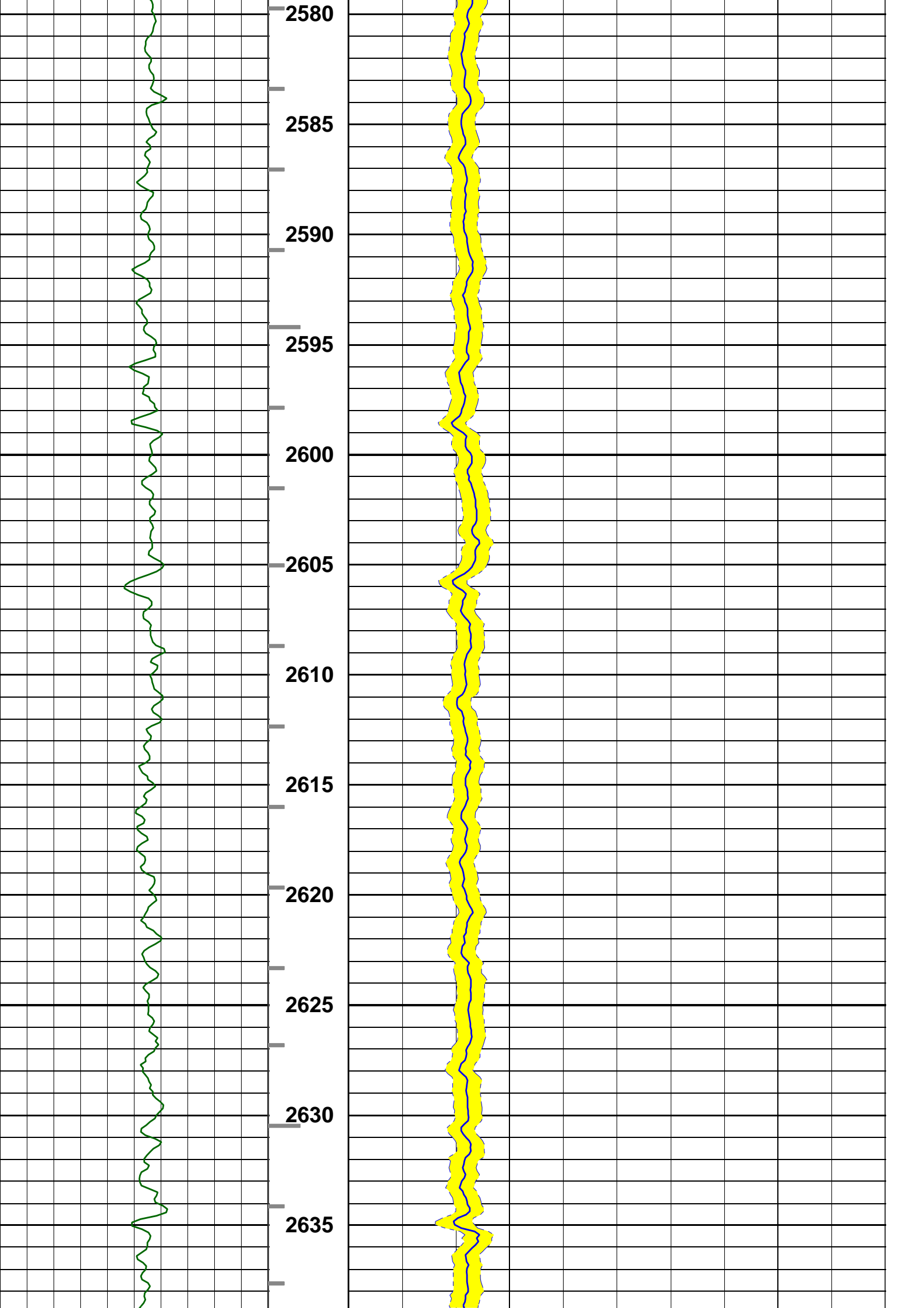
Compressional Delta-T (DTCO)
40 (us/ft) 240

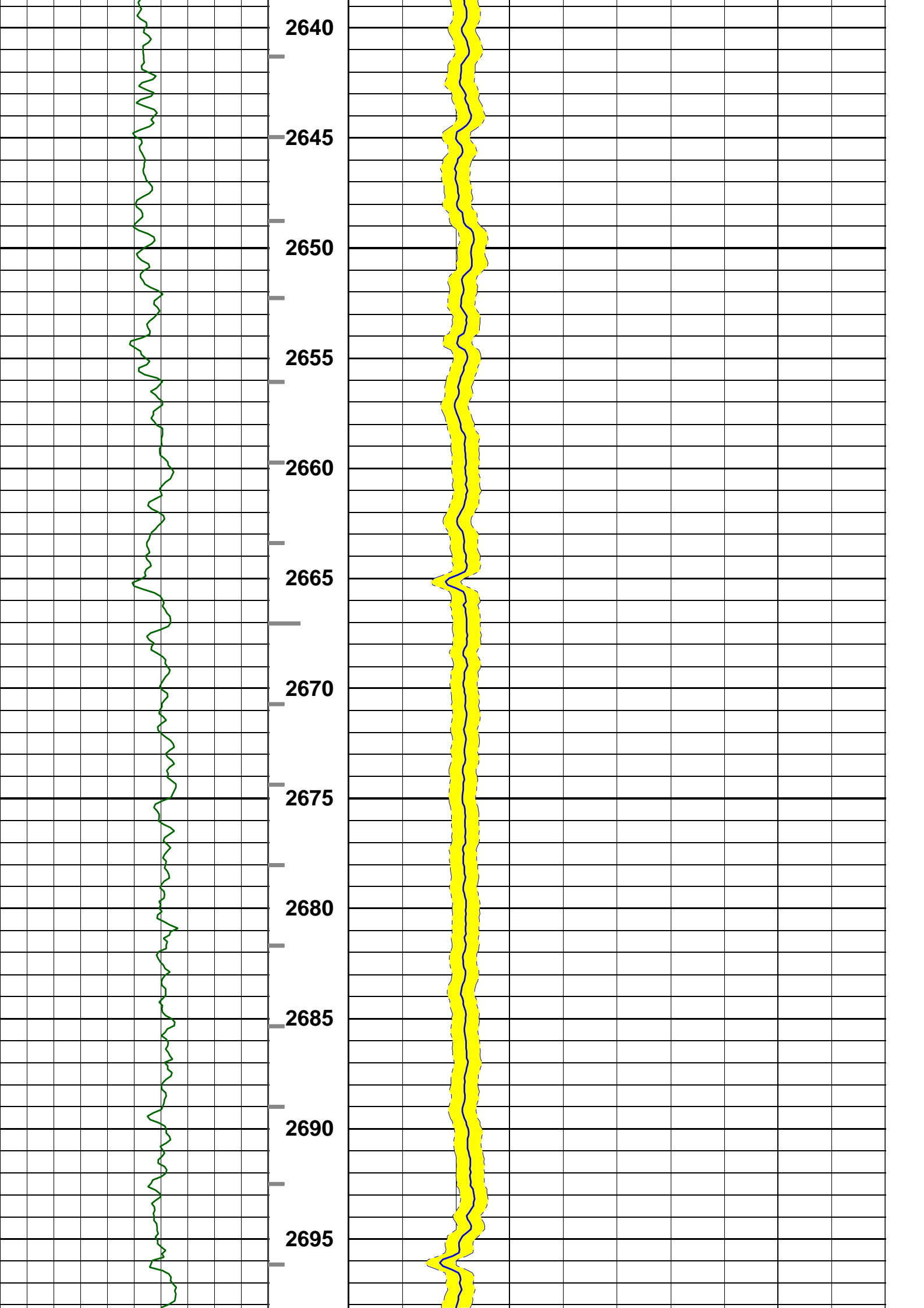


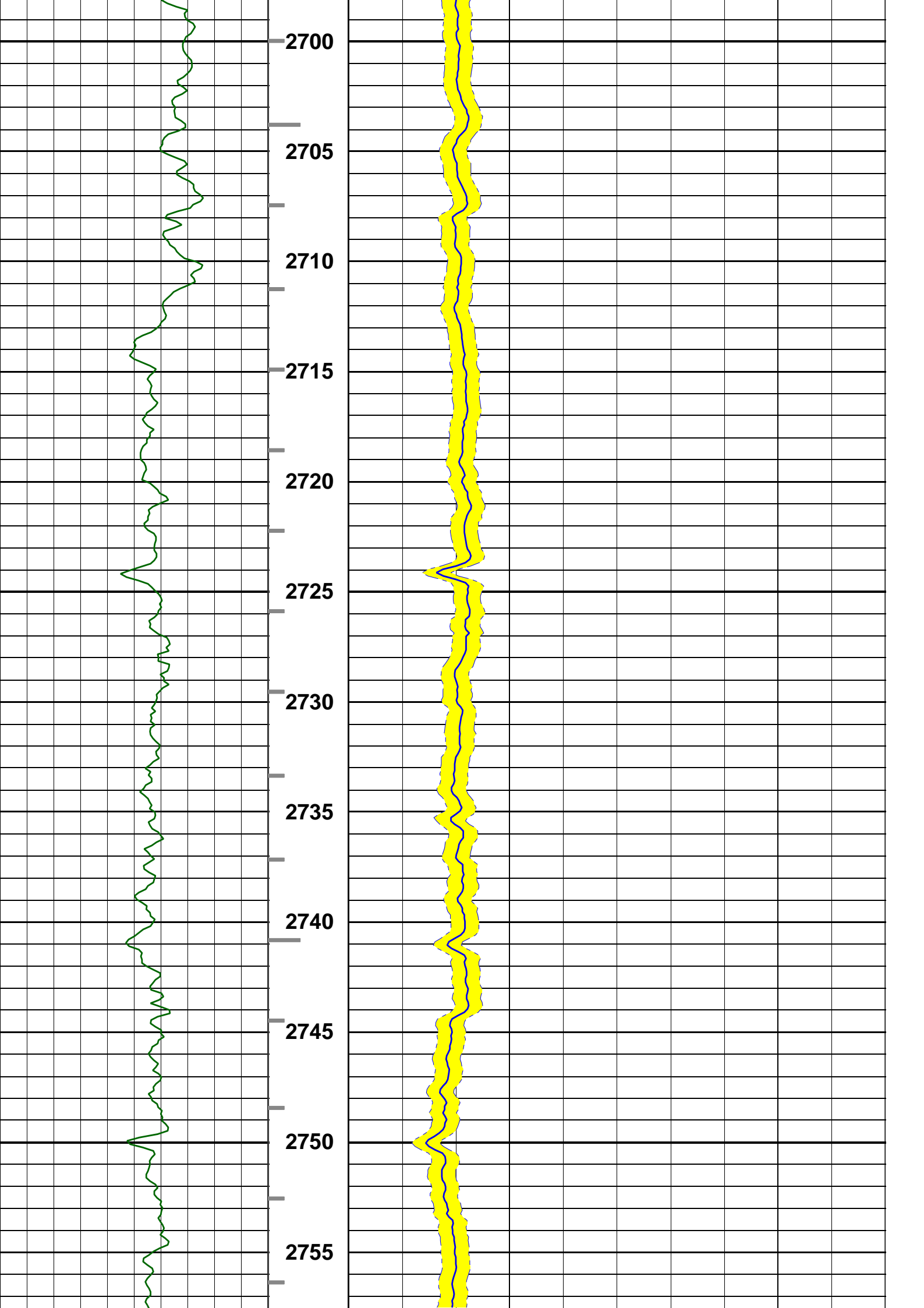


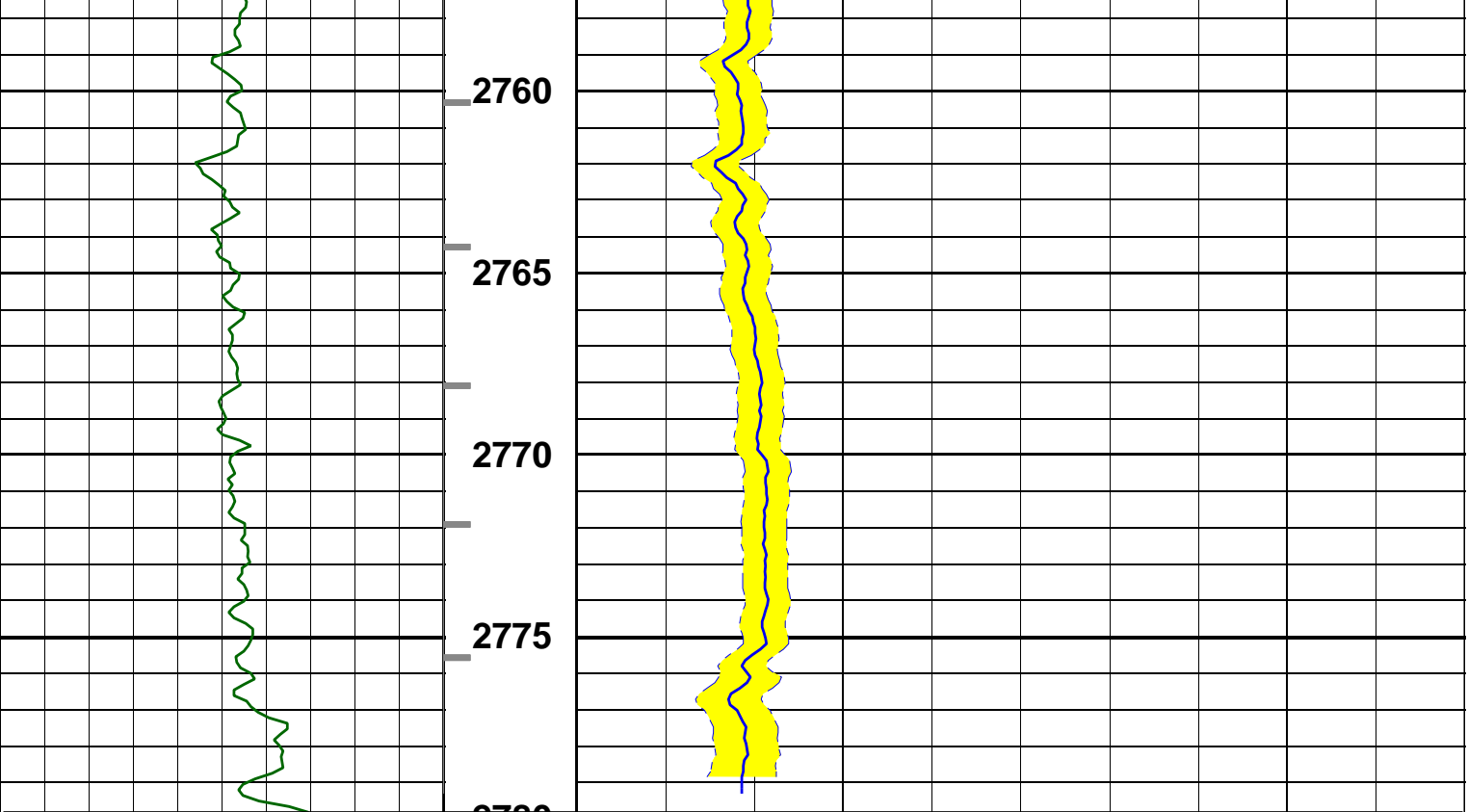








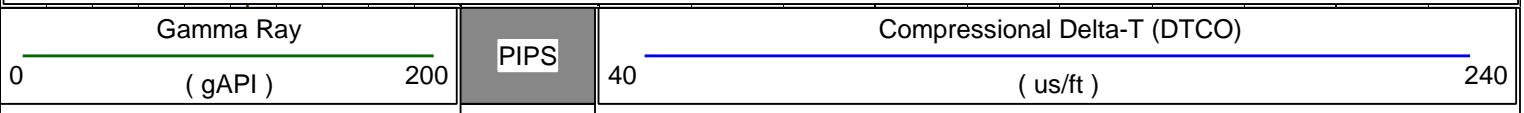




--- Finalization Result ---

- 1 MPS Compressional Receiver Absent levels= 6
- 1 MPS Compressional Transmitter Absent levels= 7
- 1 MPS Shear Receiver Absent levels= 2693
- 1 MPS Shear Transmitter Absent levels= 2713

- 1 MPS Compressional DDBHC Absent levels= 6 *Selected*
- 1 MPS Shear DDBHC Absent levels= 2713 *Selected*



PIPS

ITT

0 () 5

MD
1 : 200
m

Monopole Compressional Processing QC

WF VDL		
400	(us)	3378
TICS		
400	(us)	3378
TISS		
400	(us)	3378

TIVflag

MD
1 : 200
m

Gamma Ray
0 (gAPI) 200

SpcRC
0 (Hz) 30000

SpcRS
-15000 (Hz) 15000

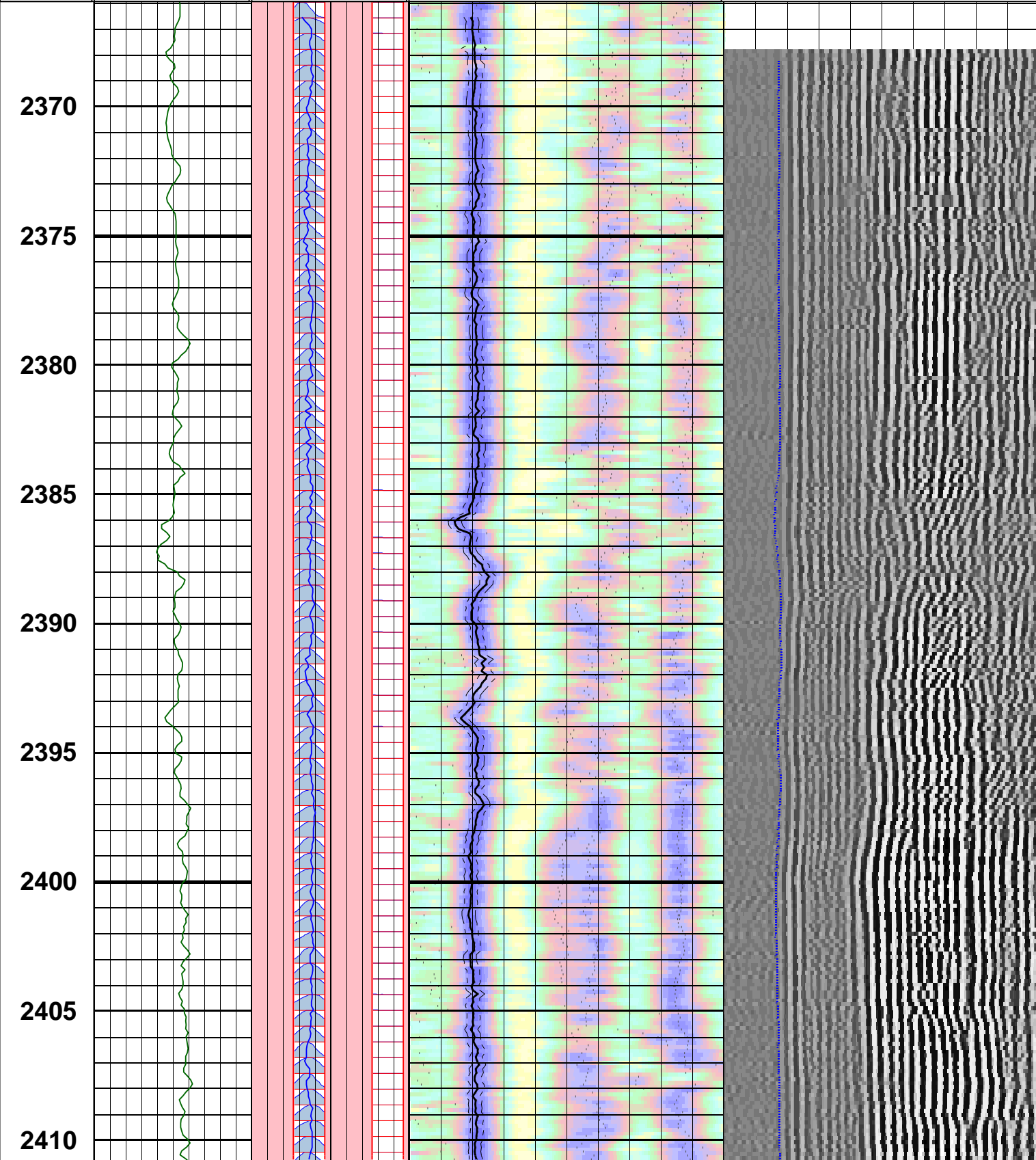
CfRC
0 (Hz) 30000

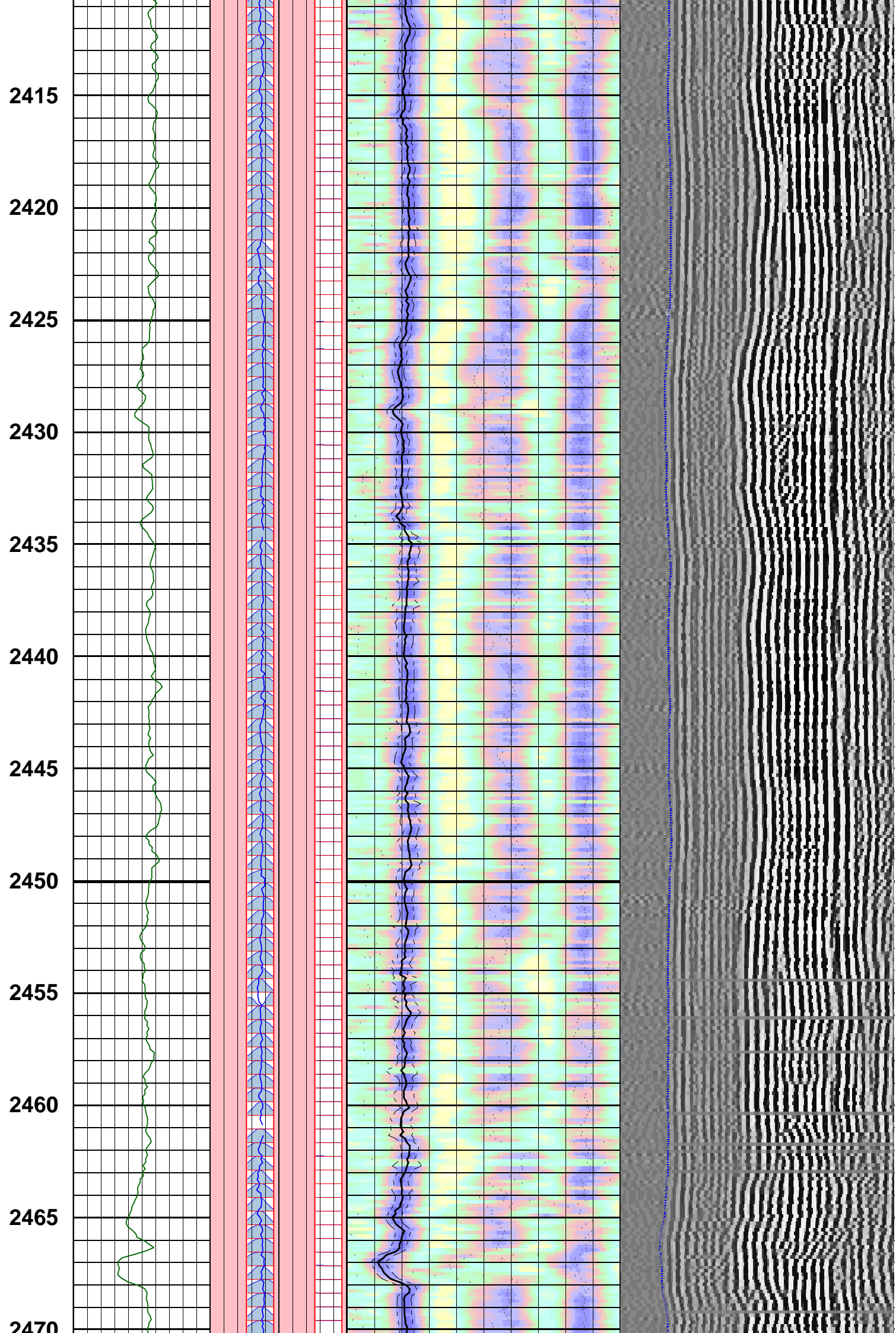
CfRS
-15000 (Hz) 15000

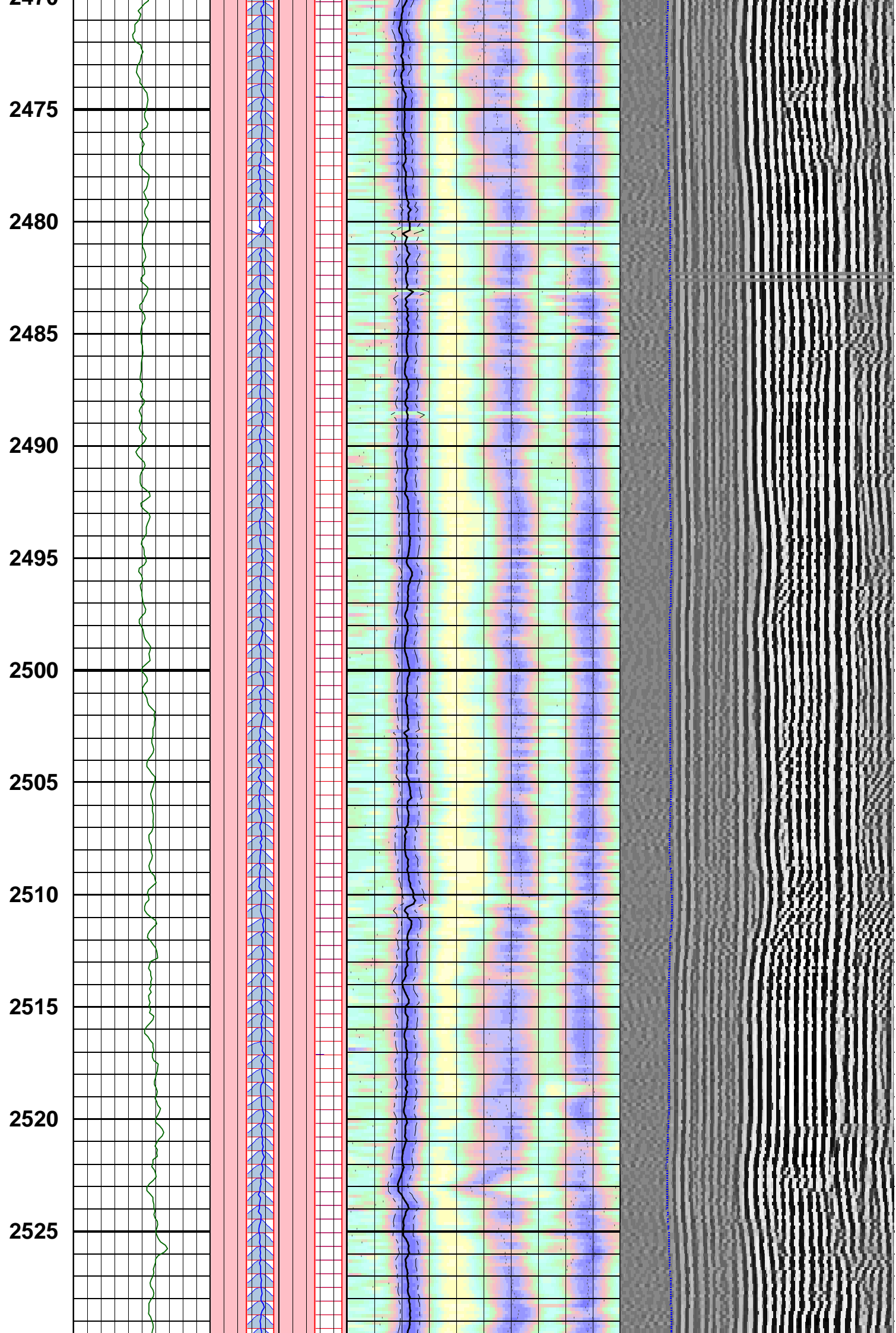
STPrjR
39 (us/ft) 240

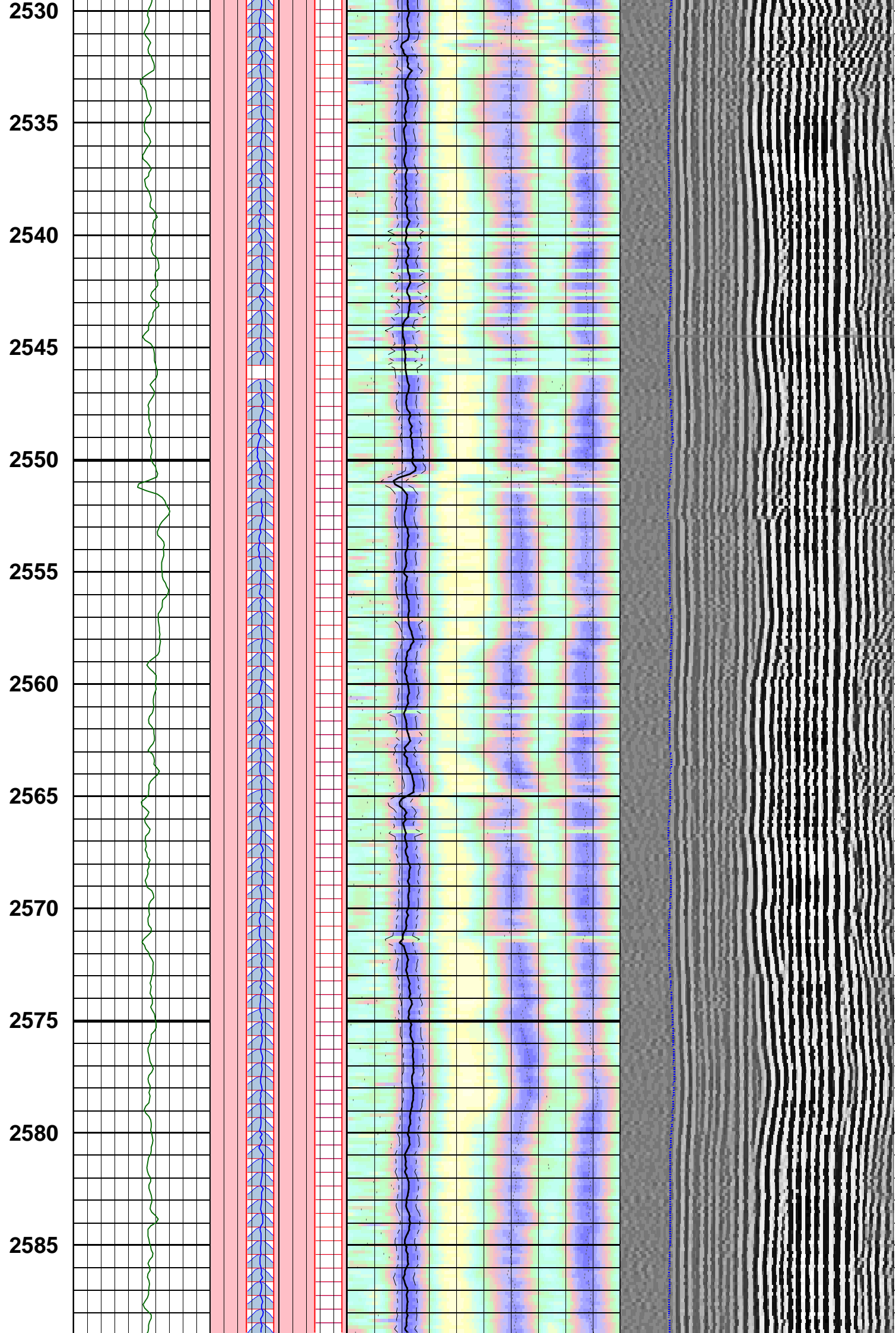
DtRC
39 (us/ft) 240

DtRS
39 (us/ft) 240

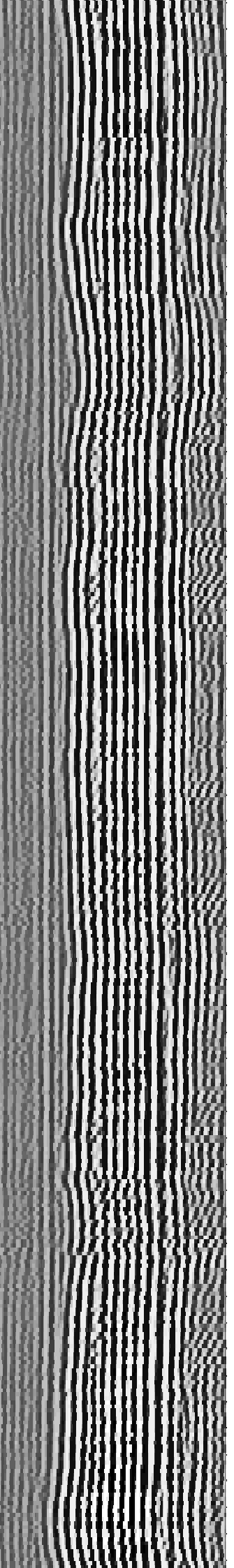
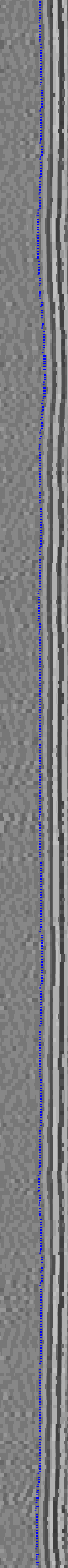
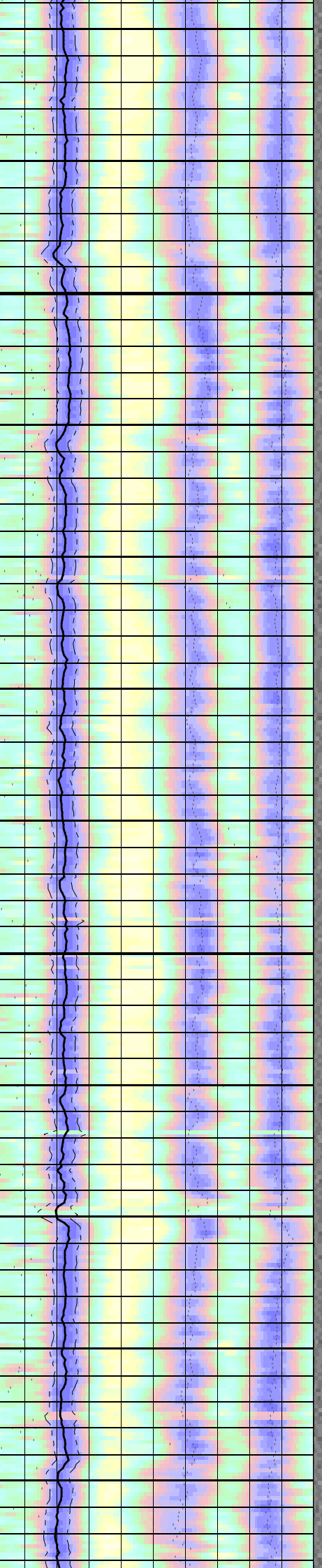
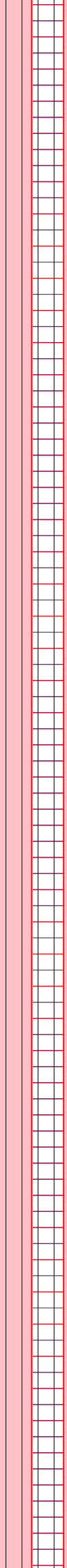
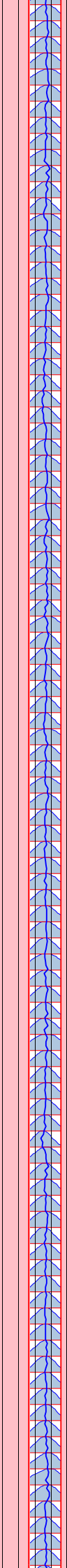
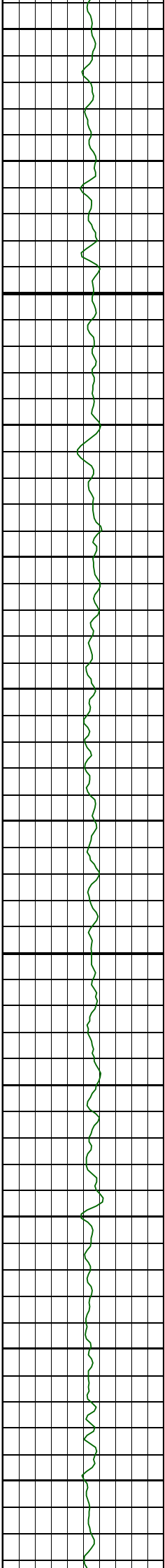


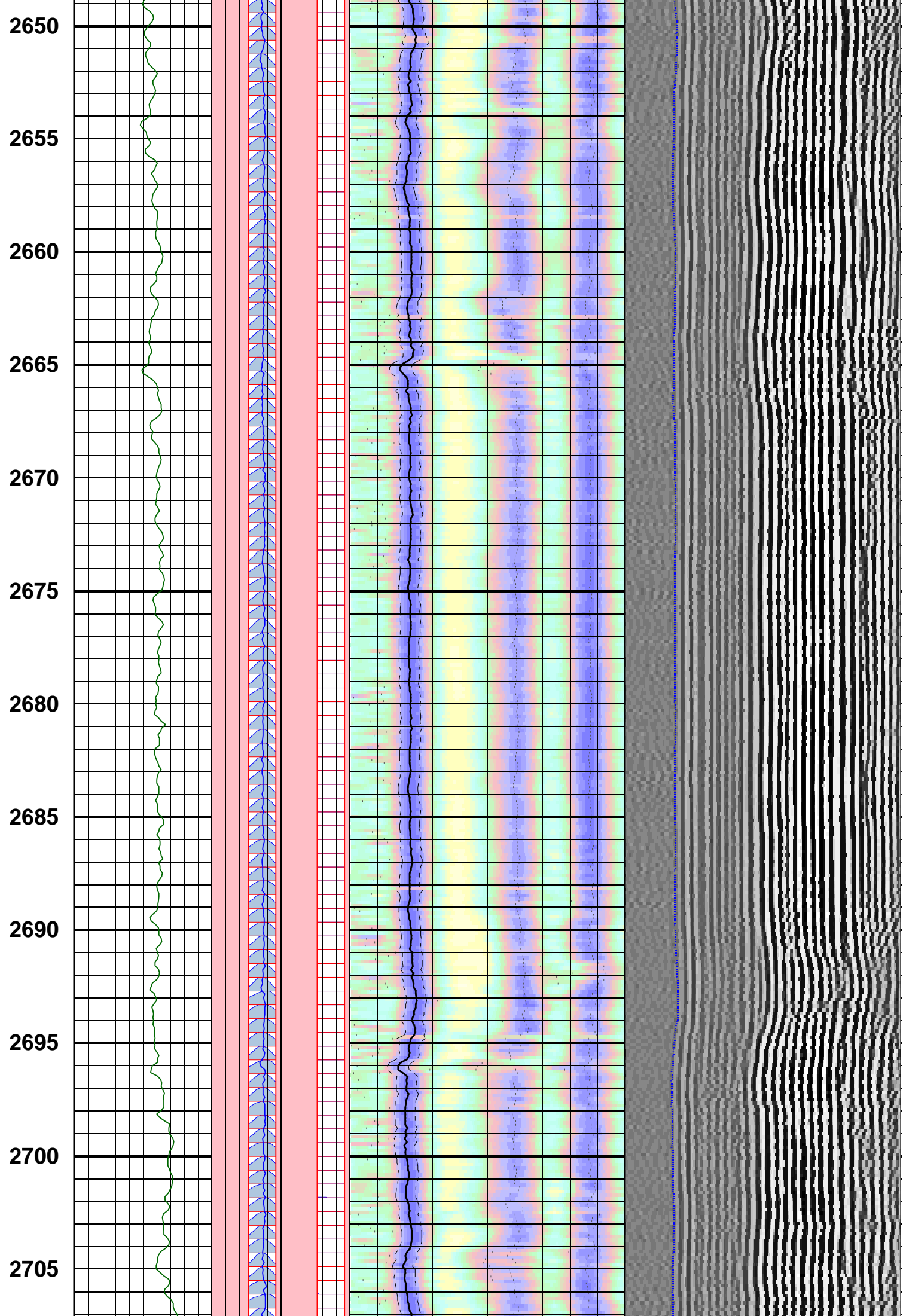




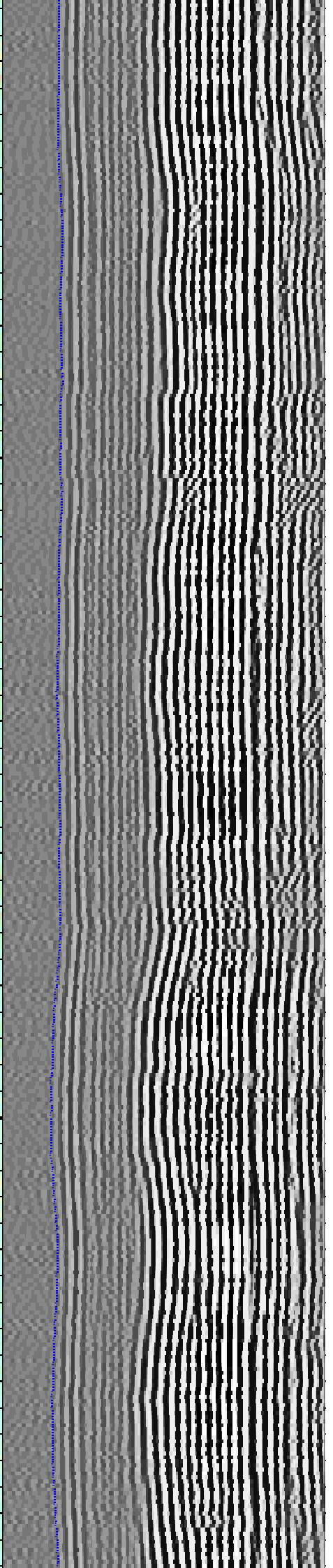
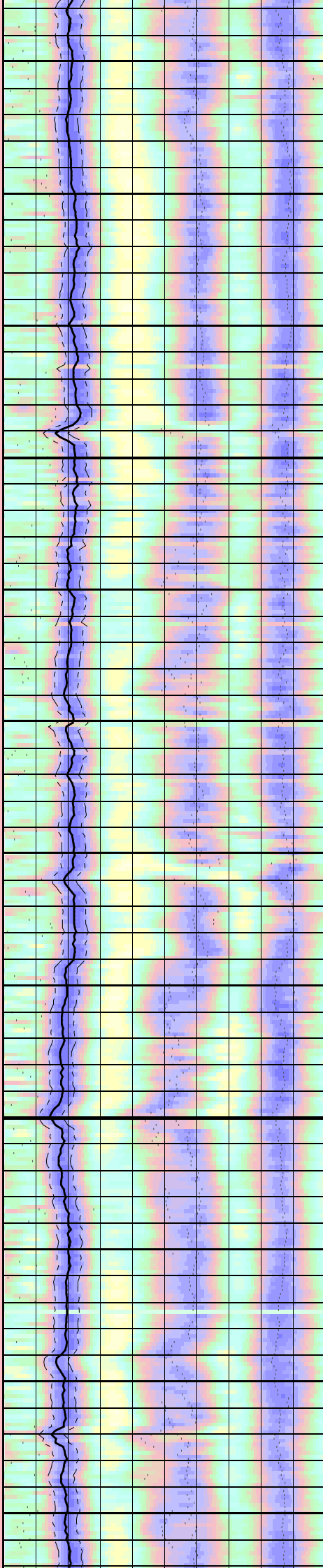
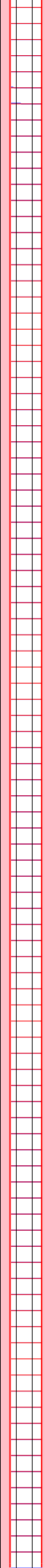
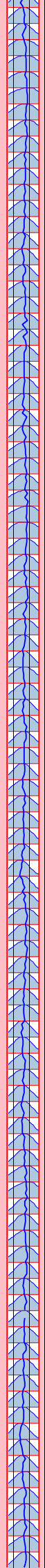
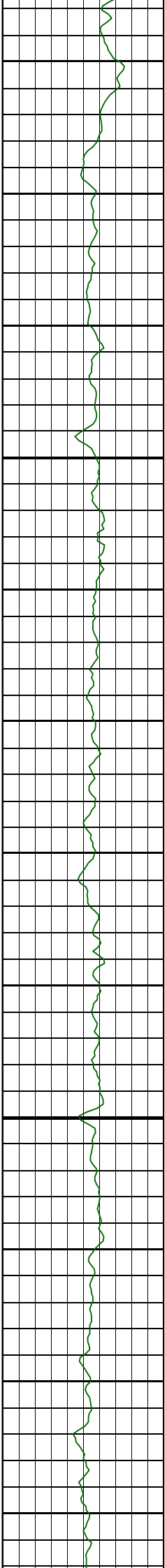


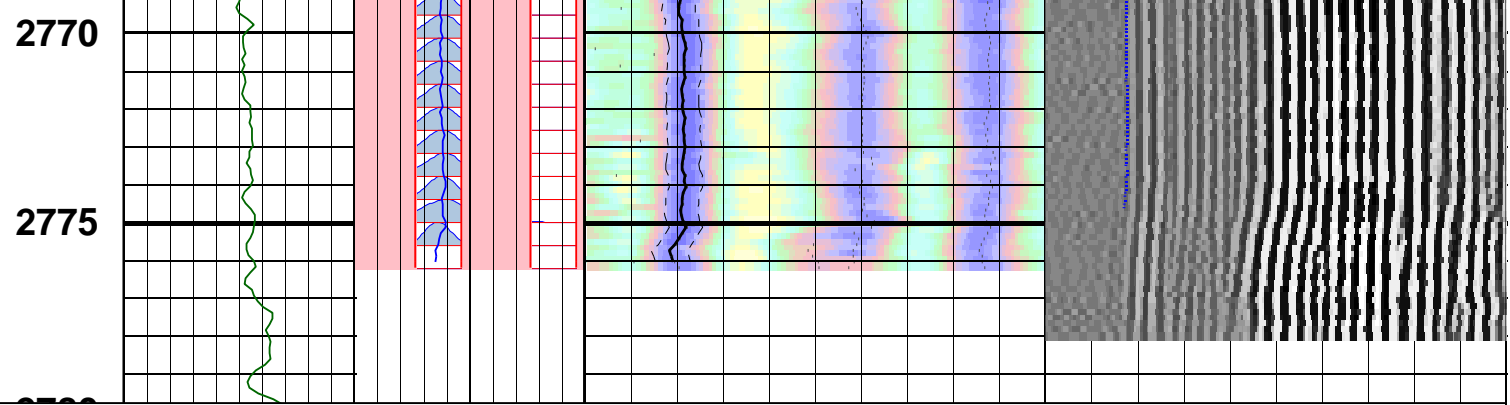
2590
2595
2600
2605
2610
2615
2620
2625
2630
2635
2640
2645





2710
2715
2720
2725
2730
2735
2740
2745
2750
2755
2760
2765





Customized Process: Start Depth (2779.28 m), Stop Depth (2365.96 m), Logging Mode (sonicVISION - MPS_WIDE)
 Noise Cut Filtering(No), Casing Cut Filtering(No)
 WF_FLG(1 1 1 1), MUD_TYPE(WBM), STCAL(Full Array)
 TRSPAC(3.05714), RRSPAC(0 0.2032 0.4064 0.6096)
 Mud Slowness (no input)
 Hole Diameter (no input)
 Zoning Guide (DTBC@LWD_060SDP;1 (2000.1 - 2776.27 m))
 Tracking Guide (SLOW@BestDT-3;3 .DTRP .CO .MPS_WIDE .ISONIC .SWP .BDT .EDT (2776.22 - 2352.09 m))

--- Zone Top Depth (0), Zone Name (Zone1) ---
 SFTY(Intermediate), BHS(OPEN), CSIZ(9.625), HDM(Fix*), HD(12.25), DTMUD(200)
 TWI(277.995), SLL(39.7135), SUL(240.267), SST(1.98568), TLL(400), TUL(3378.52), TST(39.7135)
 SBW(1200*), SBO(560*), SWD(20), TWD(1742), SEM(0.45), FLENG(35*), FLOW(8000), FHIGH(14000)
 TKO_MODEL_ORDER(2), TKO_TOL(50) TKO_FLOW(0), TKO_FHIGH(12000)

MD 1 : 200 m	Gamma Ray	CfRS	DtRS	
	0 (gAPI) 200	-15000 (Hz) 15000	39 (us/ft) 240	
	TIVflag	CfRC	DtRC	
		0 (Hz) 30000	39 (us/ft) 240	
	SpcRS	STPrjR	TISS	
	-15000 (Hz) 15000	39 (us/ft) 240	400 (us) 3378	
	SpcRC		TICS	
	0 (Hz) 30000		400 (us) 3378	
			WF VDL	
			400 (us) 3378	

Company: Beach Petroleum Ltd
 Well: Fermat-1
 FIELD: Wildcat
 Rig: West Triton
 State: VIC



Date Logged: 29-Dec-2008 Date Processed: 29-Dec-2008
 Well Location: Otway Basin

Elevations: KB: 38m GL: -38.7m
 API Number: 08ASQ0034